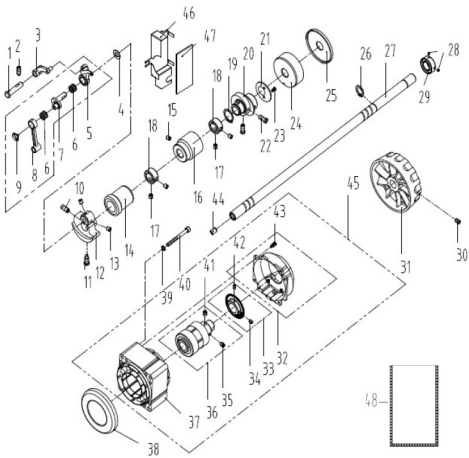


### 1. 机壳、外装部件/Machine Frame & Miscellaneous Cover Components

序号NO.	公司件号	Part NO.	名称	PartName	零件描述	Description	数量	Number
1	101S11001		后窗板螺钉SM3/16"×28 L=9		Screw SM3/16"×28 L=9		14	
2	10122003		面板调节孔螺塞		Rubber plug		2	
3	115037001		商标牌		Head card		1	
4	930000262		面板(喷漆)		Face plate asm		1	
5	13813005		左线钩		Thread guide left		1	
6	101S11007		右线钩螺钉SM11/64"×40 L=6		Screw SM11/64"×40 L=6		1	
7	115022002		面板垫		Face plate gasket		1	
8	101S11027		防油板螺钉SM1/8"×44 L=3.4		Screw SM1/8"×44 L=3.4		1	
9	113812019		面部防油板		Face oil shield asm.		1	
9	11412082		面部防油板(厚料)		Face oil shield asm.(H)		1	
10	11503000100		倒缝开关组件(三开关)		Three switch components		1	
11	101S11004		挑线杆护罩螺钉SM3/16"×28 L=7		Screw SM3/16"×28 L=7		2	
12	13812018		挑线杆防护罩		Thread take-up lever cover		1	
13	10122004		针杆曲柄螺孔塞		Rubber plug		1	
14	10122005		挑线连杆销螺孔塞		Rubber plug		1	
15	101S11004		挑线杆护罩螺钉SM3/16"×28 L=7		Screw SM3/16"×28 L=7		1	
16	13512004		三孔线勾		3-hole thread guide		1	
17	10122005		挑线连杆销螺孔塞		Rubber plug		1	
18	114S11015		割线刀螺钉SM9/64"×40 L=6		Screw SM9/64"×40 L=6		2	
19	11419001		割线刀		Knife		1	
20	138S05001		操作面板螺钉		Screw		2	
21	13822001		操作屏孔塞		Rubber plug		2	
22	20722002		油塞		Rubber plug		1	
23	115022001		后窗板垫		Side plate gasket		1	
24	930000263		后窗板(喷漆)		Side plate		1	
25	11503000900		一体机电控罩壳(琦星)		Electronic control box		1	
26	W01009		GB/T97.1-1985垫圈 5		Washer 5		2	
27	114S13001		螺栓(内六角)M5×20		Screw M5×20		1	
28	S05901		GB/T70.1-2000内六角圆柱头螺钉M5×50		Screw M5×50		3	
29	W02058		GB 93-1987弹垫d5(镀白锌)		Washer d5		2	
30	11503000300		一体机电控面板组件(琦星)		Control panel(Q)		1	
31	13810008		小夹线器螺柱		Thread tension post		1	
32	13812066		过线板		Thread tension guide plate		1	
33	14112017		小夹线板		Thread tension disk		2	
34	11227001		小夹线弹簧		Thread tension spring		1	
35	141S16019		小夹线器螺母		Thread tension nut		1	
36	1411300400		小夹线器组件		Thread tension asm.		1	
37	138S08006		小夹线器固定螺钉SM3/16"×28 L=7		Screw SM3/16"×28 L=7		1	
38	11326012		松线钉		Tension release pin		1	
39	101S15005		夹线紧固螺钉SM9/64"×40 L=5.5		Screw SM9/64"×40 L=5.5		1	
40	10122014		挑线簧调节座O型圈		Rubber ring		1	
41	10103011		挑线簧调节座		Thread tension base		1	
42	10127001		挑线簧		Thread take-up spring		1	
42	10127031		挑线簧(厚料)		Thread take-up spring(H)		1	
43	141S30001		夹线螺钉		Thread tension post		1	
44	14112015		夹线板		Thread tension disk		2	
45	14112016		松线板		Disk stopper		1	
46	10127002		夹线弹簧		Thread tension spring A		1	
46	11427050		夹线弹簧(厚料)		Thread tension spring A (H)		1	
47	10112007		夹线制动板		Thread disk rotating stopper		1	
48	141S16013		夹线螺母		Thread tension nut		1	
49	1411300300		夹线器组件		Thread tension asm.		1	
49	1411300500		夹线器组件(厚)		Thread tension asm.(H)		1	
50	11493000300		电子夹线器组件		Nest less e-device		1	
51	207S14007		螺钉M4X6		Screw M4X6		1	
52	101S12001		底板支柱		Machine head stud		4	
53	101S11019		推板簧螺钉SM3/32"×56 L=2		Screw SM3/32"×56 L=2		2	
54	10127009		推板簧		Slide plate spring		1	
55	10115002		推板		Slide plate		1	
56	13815011		针板		Needle plate		1	
56	11315001		针板(厚料)		Needle plate(H)		1	
56	10815001		针板(-7)		Needle plate(-7)		1	
57	104S17002		针板螺钉(进口) SM11/64"×40		Screw SM11/64"×40		2	
58	13812019		卷边器座		Ruler stop seat		1	
59	101S11002		卷边器座螺钉SM11/64"×40 L=5.5		Screw SM11/64"×40 L=5.5		1	
60	11413011		固定式缓线钩		Thread guide		1	
61	401S16001		螺母SM9/64"×40		Nut SM9/64"×40		1	
62	101S15010		左销螺钉SM15/64"×28 L=10.5		Screw SM15/64"×28 L=10.5		1	
63	10113004		右线钩		Thread guide right		1	
64	101S11007		右线钩螺钉SM11/64"×40 L=6		Screw SM11/64"×40 L=6		1	
65	13822028		橡皮塞(二孔)		Rubber plug		1	
66	115011001		一体机电控后侧盖(琦星)		Side cover		1	
67	115026002		电控罩壳销		Pin		1	
68	138S30007		侧盖螺钉		Screw		1	
69	H05002		GB/T896-1986卡簧3		Snap ring3		1	
70	S04010		GB/T65-1985螺钉M4×5.5		Screw M4X5.5		1	
71	13812109		侧盖固定板		Fixed plate		1	
72	101S11026		油泵安装螺钉SM15/64"×28 L=9		Screw SM15/64"X28 L=9		1	
73	113811004		尼龙扎带		Cable band		6	
74	13812081		拉簧固定板		Pull spring fixing plate		1	

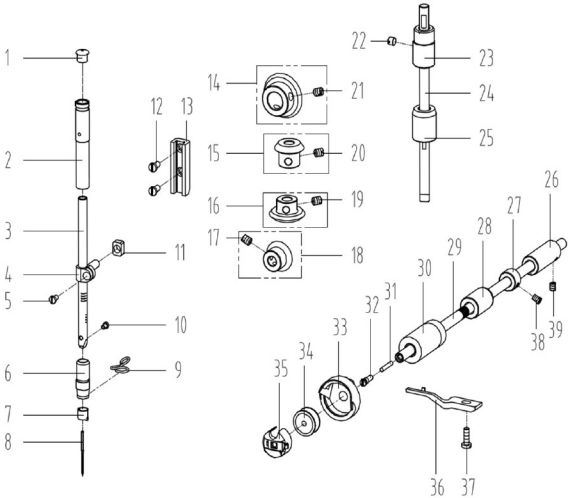
2



2. 上轴、挑线部件 /Main Shaft & Thread Take-up Components

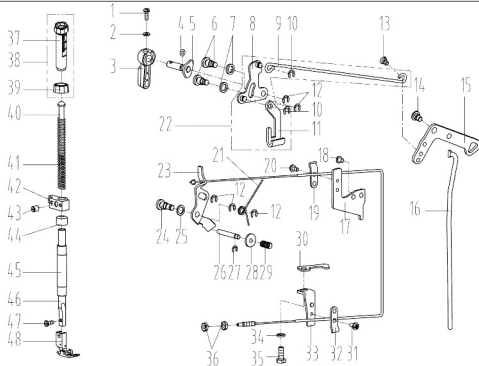
序号NO.	公司件号	Part NO.	名称	PartName	零件描述	Description	数量	Number
1	10126001		挑线连杆销	Thread take-up connecting rod pin(H)			1	
2	101S15001		上轮螺钉 SM15/64"x28 L=15	Screw SM15/64"x28 L=15			1	
3	11305010		挑线连杆	Thread take-up connecting rod			1	
	10105001		挑线连杆(厚料)	Thread take-up connecting rod(H)			1	
4	10112003		针杆曲柄护板	Needle bar crank protecting plate			1	
5	1013800100		挑线杆分组件	Thread take-up lever asm.			1	
6	1133800200		挑线杆组件(厚料)	Thread take-up lever asm.(H)			1	
	10124001		挑线杆滚针轴承	Needle bearing			2	
7	1011000100		挑线曲柄分部件	Thread take-up crank			1	
8	1011000400		挑线曲柄分部件(厚料)	Thread take-up crank(H)			1	
	10105002		针杆连杆	Needle bar connecting rod			1	
9	101S17001		挑线曲柄螺钉(左旋)	Screw			1	
10	101S15004		针杆曲柄紧固螺钉 SM9/32"x28 L=16	Screw SM9/32"x28 L=16			1	
11	101S11003		针杆曲柄定位螺钉SM9/32"x28 L=16	Screw SM9/32"x28 L=16			1	
12	10404001		针杆曲柄	Needle bar crank			1	
	11404035		针杆曲柄(厚料)	Needle bar crank(H)			1	
13	101S15002		送料轴挡圈螺钉SM1/4"x40 L=6	Screw SM1/4"x40 L=6			2	
14	1140300200		上轴前轴套组件	Main shaft bushing front			1	
15	101S15006		夹线器螺钉SM15/64"x28 L=7	Screw SM15/64"x28 L=7			1	
16	12203002		主轴中轴套	Main shaft bushing mid			1	
17	101S14001		上轴中套挡圈螺钉	Screw			4	
18	10108001		上轴挡圈	Main shaft thrust collar			2	
19	H03002		挡圈20	Snap ring 20			1	
20	400092		送料偏心轮	Feed eccentric cam			1	
	400811		送料偏心轮(厚料)	Feed eccentric cam (H)			1	
21	10112017		送料偏心轮盖板	Cover plate			1	
	10812002		送料偏心轮盖板(厚料)	Cover plate(H)			1	
22	101S11013		送料偏心轮螺钉 SM1/4"x40 L=13	Screw SM1/4"x40 L=13			2	
23	113S11003		护针片螺钉 SM9/64"x40 L=5	Screw SM9/64"x40 L=5			2	
24	13803002		上轴后轴套	The rear axle sleeve			1	
25	10122105		上轴后套挡油封	Oil seal			1	
26	H03001		GB/T894.1-1986挡圈15	Snap ring 15			1	
27	115002001		上轴	Main shaft			1	
28	S10026		GB/T80-1985螺钉M3×3(进口)	Screw M3×3			2	
29	115008001		电机防尘套	Motor dust jacket			1	
30	S10009		螺钉	Screw			2	
31	302830		手轮(喷漆)	Handwheel			1	
32	195100073		电机罩壳组件(配琦星)	Motor cover asm(Q)			1	
33	95100117		电机光栅组件(配琦星)	Motor grating sensor asm(Q)			1	
34	S09022		内六角平端紧定螺钉M3×4	Screw M3×4			1	
35	S09162		内六角平端紧定螺钉M6×6	Screw M6×6			1	
36	95100182		电机转子总成	Motor rotor			1	
37	95100171		电机定子总成	Motor stator			1	
38	13811060		电机绝缘防护罩	Motor insulation shield			1	
39	W02058		GB 93-1987弹垫d5	Spring washer 5			3	
40	S05901		内六角圆柱头螺钉M5×50	Screw M5×50			3	
41	S09162		内六角平端紧定螺钉M6×6	Screw M6×8			1	
42	S09022		内六角平端紧定螺钉M3×4	Screw M3×4			1	
43	951S15011		一十字槽小盘头螺钉组合件M3×12	Screw M3×12			5	
44	10122012		上轴孔塞	Rubber plug			1	
45	115033001		光电伺服电机(琦星)	Motor(Q)			1	
46	14112004		防油罩	Oil shield			1	
47	14123001		防油罩油棉	Oil cotton			1	
48	13831015		塑料袋28x18(cm)厚0.03mm	Plastic bag 28cmx18cmx0.03mm			1	

3



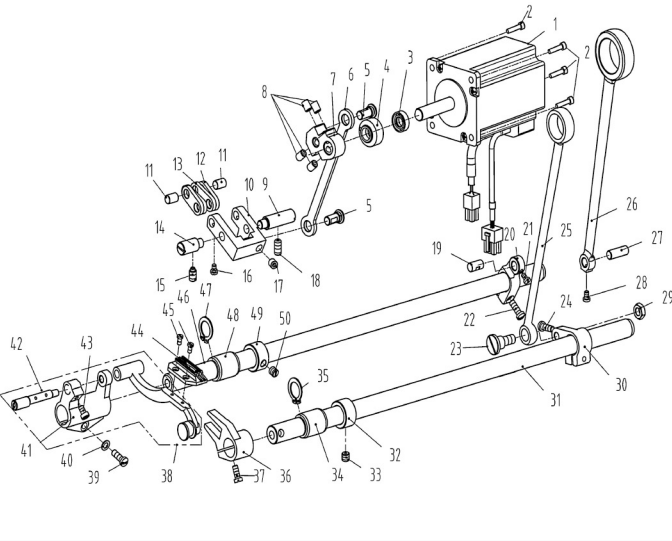
3. 针杆、竖轴、下轴部件/Needle bar & Upright Shaft & Hook Driving Shaft Components

序号 NO.	公司件号 Part NO.	名称 PartName	零件描述 Description	数量 Number
1	10122013	针杆上衬套孔塞	Rubber plug	1
2	14103009	针杆上衬套	Needle bar bushing upper	1
	10103009	针杆上衬套 (厚料)	Needle bar bushing upper(H)	1
3	11402039	针杆	Needle bar	1
	10102021	针杆(厚料)	Needle bar (H)	1
4	10138002	针杆连接柱	Needle bar connecting rod	1
5	101511005	螺钉 SM9/64"x40 L=6	Screw SM9/64"x40 L=6	1
6	10103010	针杆下衬套	Needle bar bushing lower	1
	11303023	针杆下衬套(厚料)	Needle bar bushing lower(H)	1
7	10113002	针杆线勾	Needle bar thread guide	1
	11412063	针杆线勾(厚料)	Needle bar thread guide(H)	1
8	10117001	机针(14#)	Needle	1
	10117002	机针DPx5#21(厚料)	Needle(H)	1
9	10413001	针杆下衬套线勾	Lower bushing thread guide	1
	10113009	针杆下轴套线勾(厚料)	Lower bushing thread guide(H)	1
10	104511006	支针螺钉(进口) SM1/8"x44 L=4.5	Screw SM1/8"x44 L=4.5	1
11	10109001	针杆连接块	Slide block	1
12	101511008	滑块导轨螺钉SM11/64"x40 L=8	Screw SM11/64"x40 L=8	2
13	10109002	针杆接头滑块导轨	Needle bar guide	1
14	10425004	上轴伞齿轮	Upper shaft bevel gear	1
15	10425003	竖轴上伞齿轮	Upper small bevel gear asm	1
16	10425002	竖轴下伞齿轮	lower large bevel gear asm	1
17	101515014	齿轮螺钉SM1/4"x40 L=7	Screw SM1/4"x40 L=7	2
18	10425001	下轴伞齿轮	Hook drive shaft bevel gear	1
19	101515014	齿轮螺钉SM1/4"x40 L=7	Screw SM1/4"x40 L=7	2
20	101515014	齿轮螺钉SM1/4"x40 L=7	Screw SM1/4"x40 L=7	2
21	101515014	齿轮螺钉SM1/4"x40 L=7	Screw SM1/4"x40 L=7	2
22	113511036	一字开槽紧定螺钉SM15/64"x28 L=4.7	Screw SM15/64"x28 L=4.7	1
23	10403020	竖轴上轴套	Upright shaft bushing upper	1
24	10102007	竖轴	Upright shaft	1
25	10403013	竖轴下轴套	Upright shaft bushing lower	1
26	10403019	下轴后轴套	Hook driving shaft bushing back	1
27	10108002	下轴挡圈	Hook driving shaft snap ring	1
28	113803006	下轴中套	Lower shaft middle bushing	1
29	13802061	下轴	Hook driving shaft	1
30	11303001	下轴前轴套	Hook driving shaft bushing front	1
31	13823001	下轴限油芯	Oil wick	1
32	101530005	下轴限油螺钉	set screw	1
33	11418003	广濶厚料旋梭(扩大缝切范围)	Hook asm(Hirose)	1
	11418004	广濶厚料旋梭(新)(有尾巴)	Hook asm(Hirose)(H)	1
34	10118003	梭心	Bobbin	1
35	11218504	梭壳	Bobbin case asm.	1
36	10112016	旋梭定位钩	Finger positioner	1
	10112032	旋梭定位钩(厚料)	Finger positioner(H)	1
37	116511005	牙架曲柄螺钉 SM11/64"x40 L=13	Screw SM11/64"x40 L=13	1
38	101511012	下轴挡圈螺钉 SM11/64"x40 L=4.8	Screw SM11/64"x40 L=4.8	2
39	113514020	下轴后套螺钉SM11/64"x40 L=6	Screw SM11/64"x40 L=6	1



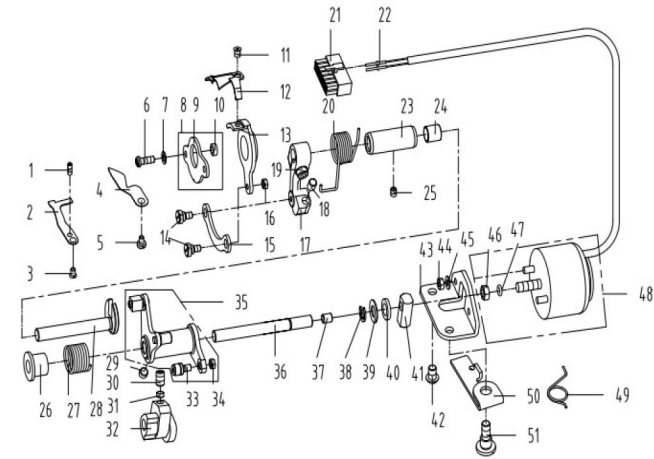
#### 4. 压料、自动抬压脚部件/Presser Bar & Auto Lifter Components

序号NO.	公司件号	Part NO.	名称	PartName	零件描述	Description	数量	Number
1	101S11010		压脚扳手螺钉SM9/64"x40 L=11		Screw SM9/64"x40 L=11		1	
2	10128002		压脚扳手螺钉垫圈		Washer		1	
3	13811029		压脚扳手		Hand lifter		1	
4	O01004		O型圈		Rubber ring		1	
5	1381000200		压脚扳手凸轮分部件		Hand lifter cam asm.		1	
6	101S20001		前杠杆螺钉		Screw		2	
7	10128015		螺钉销橡胶垫圈(厚)		Washer(H)		2	
8	1381203000		抬压脚前杠杆分部件		Lift front lever component		1	
9	10112013		抬压脚拉杆		Knee lifter pull rod		1	
10	H05003		开口挡圈 5		Snap ring 5		2	
11	10112010		压脚升降板		Lifting plate		1	
12	11329020		开口挡圈 5		Snap ring 5		5	
13	101S20004		抬压脚拉杆螺钉SM3/16"x32		Hinge Screw SM3/16"x32		1	
14	101S20003		后杠杆轴位螺钉SM15/64"x28		Hinge screw SM15/64"x28		1	
15	12812033		抬压脚后杠杆		Knee lifter back lever		1	
16	13812028		抬压脚顶杆		Knee lifter connecting rod		1	
17	11212009		松线导管上支架		Wire release bracket upper		1	
18	101S11004		油管压板螺钉SM3/16"x28 L=7		Screw SM3/16"x28 L=7		1	
19	11212008		松线导管压板		Wire release press plate		1	
20	113S11004		松线导管压板螺钉M4x8		Screw M4x8		1	
21	11427009		松线顶板复位簧		Reset spring		1	
22	1381203200		抬压脚前杠杆组件		Knee lifter lever asm		1	
23	11381201100		松线顶板组件		Wire release plate asm		1	
24	101S20002		松线顶板螺钉		Wire release plate pin		1	
25	10128015		螺钉销橡胶垫圈(厚)		Washer(H)		1	
26	10126003		松线辅钉		Thread release supporting pin		1	
27	H05012		开口挡圈 4(日标)		Snap ring 4		1	
28	10128001		松线辅钉垫片		washer		1	
29	10127003		松线辅钉弹簧		Spring		1	
30	10112022		旋梭供油管压板		Tube press plate		1	
31	113S11004		松线导管压板螺钉M4x8		Screw M4x8		1	
32	11212008		松线导管压板		Wire presser A		1	
33	11312001		松线导管下支架		Wire release bracket lower		1	
34	W02004		弹性垫圈		Spring washer		1	
35	116S30003		抬牙叉固定螺钉SM15/64"x28 L=14.5		Screw SM15/64"x28 L=14.5		1	
36	113S12001		螺母 SM3/16"x32		Nut SM3/16"x32		2	
37	13811005		调压螺钉		Press regulating screw		1	
38	1138NS30003		调压螺钉(厚)		Press regulating screw (H)		1	
39	1381102700		调压螺钉组件		Presser regulating screw nut asm.		1	
40	13811006		调压螺母		Press regulating nut		1	
41	1138NS16005		调压螺母(厚)		Press regulating nut(H)		1	
42	10102003		调压导杆		Press regulating guide bar		1	
43	113827010		调压簧		Press regulating spring		1	
44	10127024		调压簧(厚)		Press regulating spring(H)		1	
45	13809030		压杆导架		Presser bar guide bracket		1	
46	101S15007		压杆导架螺钉 SM1/4"x40 L=8		Screw SM1/4"x40 L=8		1	
47	10122112		压杆防油套		Pressure bar oil cover		1	
48	10103012		压杆衬套		Presser bar bushing,lower		1	
49	113802009		压杆		Presser bar		1	
50	101S11009		活压脚螺钉 SM9/64"x40 L=10.5		Screw SM9/64"x40 L=10.5		1	
51	1131600600		压脚组件		Presser foot asm		1	
52	1131600300		压脚组件(厚)		Presser foot asm(H)		1	



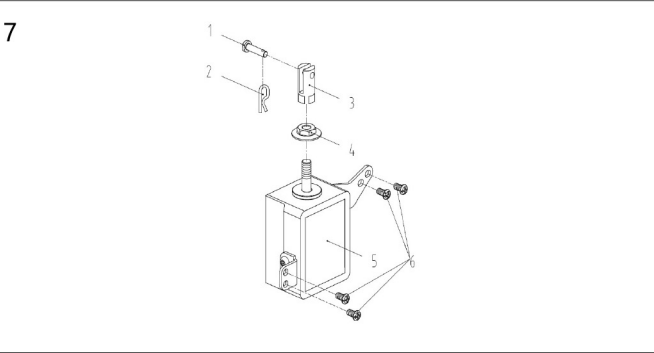
5. 送料部件/Feed Mechanism Components

序号NO.	公司件号	Part NO.	名称	PartName	零件描述	Description	数量	Number
1	114933002		步进电机(琦星)		Stepper motor(Q)		1	
2	S05978		六角圆柱头螺钉SM3/16"x28		Screw SM3/16"x28		4	
3	114922002		步进电机轴套油封Φ10×Φ16×5		Stepper motor bushing oil seal		1	
4	114903001		步进电机轴套		Stepper motor bushing		1	
5	114926001		针距曲柄销		Needle gage crank pin		2	
6	114905001		针距连杆		Needle pitch rod		1	
7	114904001		针距曲柄		Needle gage crank		1	
8	S10009		GB/T80-1985螺钉M6×8		Screw M6x8		4	
9	10126010		送料摆动板座右销		Right pin		1	
10	114901001		送料摆动板座		Feed shaking plate		1	
11	10126007		短摆动板连杆销		Connecting pin		2	
12	10109005		送料短摆动板		Feed short shaking plate		2	
	13505024		送料短摆动板(厚料)		Feed short shaking plate(H)		2	
13	10109004		送料长摆动板		Feed long shaking plate		2	
14	10126009		送料摆动板座左销		Left pin		1	
15	101S15010		左销螺钉 SM15/64"x28 L=10.5		Screw SM15/64"x28 L=10.5		1	
16	101S11005		螺钉 SM9/64"x40 L=6		Screw SM9/64"x40 L=6		2	
17	101S14001		上轴中套挡圈螺钉(SM1/4"x40)		Screw SM1/4"x40		1	
18	113S14010		左销螺钉SM15/64"x28 L=12		Screw SM15/64"x28 L=12		1	
19	10126011		送料曲柄销		Feed rocker crank pin		1	
20	10104002		送料曲柄		Feed rocker shaft crank		1	
	11304010		送料曲柄(-7)		Feed rocker shaft crank(-7)		1	
21	101S11005		螺钉 SM9/64"x40 L=6		Screw SM9/64"x40 L=6		1	
22	101S11016		送料曲柄螺钉SM3/16"x28 L=14		Screw SM3/16"x28 L=14		1	
23	101S20005		抬牙连杆轴位螺钉 SM9/32"x28		hinge Screw SM9/32"x28		1	
24	101S11016		送料曲柄螺钉 SM3/16"x28 L=14		Screw SM3/16"x28 L=14		1	
25	400093		抬牙连杆		Connecting rod		1	
	400091		送料连杆		Rocker shaft connecting rod		1	
26	400091		送料连杆(厚料)		Rocker shaft connecting rod(H)		1	
	400083		送料连杆(-7)		Rocker shaft connecting rod(-7)		1	
27	10126006		送料连杆销		Connecting rod pin		1	
28	101S11005		螺钉 SM9/64"x40 L=6		Screw SM9/64"x40 L=6		1	
29	101S16003		抬牙连杆轴位螺母 SM9/32"x28		Hinge Screw SM9/32"x28		1	
30	10104004		抬牙后曲柄		Feed driving shaft crank		1	
31	13802001		抬牙轴		Feed driving shaft		1	
32	10108003		送料轴挡圈		Feed rocker shaft snap ring		1	
33	101S15002		送料轴挡圈螺钉SM1/4"x40 L=6		Screw SM1/4"x40 L=6		2	
34	10403015		轴套		Bushing		1	
35	H03001		GB/T894.1-1986挡圈 15		Snap ring 15		1	
36	10104003		抬牙叉形曲柄		Driving shaft crank		1	
	10804003		抬牙叉形曲柄(厚料)		Driving shaft crank(H)		1	
	10804003		抬牙叉形曲柄(-7)		Driving shaft crank(-7)		1	
37	101S11020		抬牙叉形曲柄螺钉SM11/64"x40 L=10.5		Screw SM11/64"x40 L=10.5		1	
38	11380700300		牙架		Feed bar asm.		1	
39	101S11016		送料曲柄螺钉SM3/16"x28 L=14		Screw SM3/16"x28 L=14		1	
40	10128003		牙架座螺钉垫圈		Washer		1	
41	480095		牙架座		Feed bar bed.		1	
42	10401007		牙架销(自制)		Feed bar pin		1	
43	101S11025		复位板螺钉SM11/64"x40 L=7		Screw SM11/64"x40 L=7		1	
	13814005		送料牙		Feed dog		1	
44	11314001		送料牙(厚料)		Feed dog (H)		1	
	11414001		送料牙(-7)		Feed dog (-7)		1	
45	101S11018		送料牙螺钉 SM1/8"x44 L=6		Screw SM1/8"x44 L=6		2	
46	10102008		送料轴		Feed rocker shaft		1	
47	H03001		GB/T894.1-1986挡圈 15		Snap ring 15		1	
48	10403015		轴套		Bushing		1	
49	10108003		送料轴挡圈		Feed rocker shaft snap ring		1	
50	101S15002		送料轴挡圈螺钉SM1/4"x40 L=6		Screw SM1/4"x40 L=6		2	



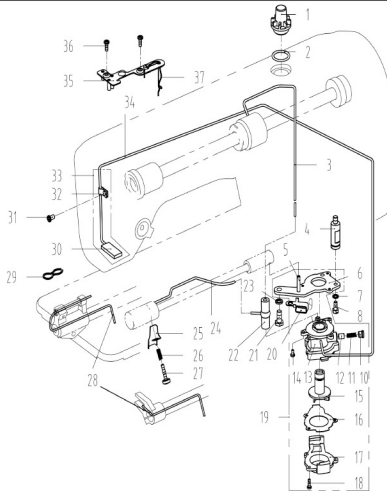
6. 剪线部件/Thread Trimmer Components

序号NO.	公司件号	Part NO.	名称	PartName	零件描述	Description	数量	Number
1	113S15002		定刀调节螺钉SM1/8"x44 L=9.5		Screw SM1/8"x44 L=9.5		1	
2	11319001		定刀		Secant knife		1	
3	113S17001		螺钉SM9/64"x40		Screw SM9/64"x40		1	
4	11312003		护针片		Needle guard patch		1	
5	201S11009		螺钉SM9/64"x40 L=5.5		Screw SM9/64"x40 L=5.5		1	
6	113S11001		螺钉SM11/64"x40 L=12		Screw SM11/64"x40 L=12		2	
7	10128003		牙架座螺钉垫圈		Washer		2	
8	1381203100		刀架压板组件		Knife bracket press component		1	
9	13812031		刀架压板		Knife bracket press		1	
10	13803012		短套		Short bushing		2	
11	113S17002		活动刀固定螺钉SM11/64"x40 L=4.4		Screw SM11/64"x40 L=4.4		2	
12	11319002		活动刀(薄料长槽)		Motorial knife		1	
13	11319003		活动刀(厚料长槽)		Motorial knife(H)		1	
14	11307001		剪线刀架		Knife bracket		1	
15	113S20001		连杆螺钉SM11/64"x40		hinge Screw SM11/64"x40		2	
16	11312005		剪线连杆		Connecting rod		1	
17	114S16004		螺母SM11/64"x40		Nut SM11/64"x40		1	
18	11304001		剪线驱动曲柄		Crank		1	
19	113822014		驱动曲柄止动块		Crank driver stopper block		1	
20	S05004		螺钉M5x14		Screw M5x14		1	
21	11327001		剪线复位弹簧		Spring		1	
22	11230004		14孔接线器		Plug		1	
23	11230005		电线插针		Pin		1	
24	11303003		切线轴套		Thread cutting shaft bushing		1	
25	11503005		驱动曲柄轴衬套		Crank drive shaft bushing		1	
26	113S14020		螺钉SM11/64"x40 L=6		Screw SM11/64"x40 L=6		1	
27	11322002		扭簧端盖		Spring cover		1	
28	11327002		弹簧		Spring		1	
29	11304002		切线凸轮曲柄轴		Crank shaft		1	
30	101S14001		上轴挡圈螺钉		Screw		1	
31	116S14005		螺钉SM1/4"x40 L=10		Screw SM1/4"x40 L=10		2	
32	11309030		凸轮顶柱		Push rod		2	
33	11310004		剪线凸轮		Cam		1	
34	11310011		剪线凸轮(厚料)		Cam(H)		1	
35	11324001		滚柱		Roolling pin		1	
36	1138NS16001		螺母SM11/64"x40		Nut SM11/64"x40		1	
37	1130400500		剪线驱动组件		Thread trimmer drive asm.		1	
38	11302002		剪线驱动轴		Shaft		1	
39	11322001		驱动曲柄止动块		Positioning block		1	
40	H05013		GB/T896-1986挡圈		Snap ring		1	
41	10112003		针杆曲柄护板		Cunter weight protecting		1	
42	11322003		电磁铁缓冲垫		Solenoid cushion rubber		1	
43	11309001		切线电磁铁顶销		Solenoid pin		1	
44	101S11026		油泵安装螺钉SM15/64"x28 L=9		Screw SM15/64"x28 L=9		1	
45	11312006		切线磁铁支架		Solenoid bracket		1	
46	N01005		螺母 M4		Nut M4		2	
47	W02002		GB/T93-1987 弹簧垫圈4		Washer		2	
48	112S16006		螺母SM1/4"x40		Nut SM1/4"x40		1	
49	113822005		垫圈		Washer		1	
50	11503000400		剪线电磁铁组件		Thread trimmer solenoid asm.		1	
51	11327003		弹簧		Spring		1	
52	11312007		松线座		Thread release bed		1	
53	113S20002		螺钉SM1/4"x28		Screw SM1/4"x28		1	



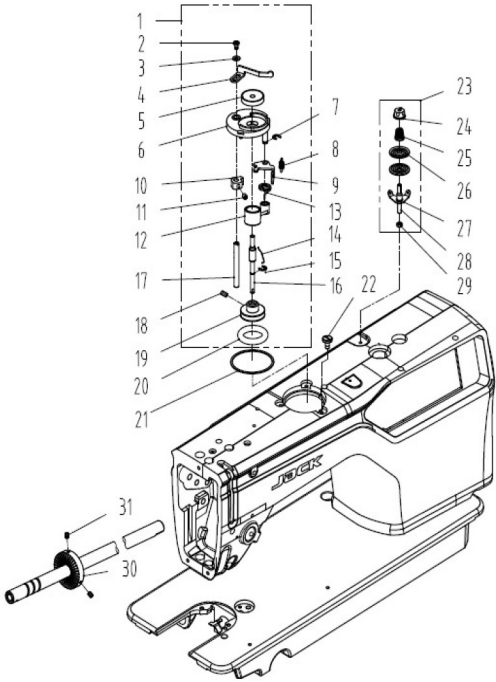
7. 自动抬压脚部件/Auto Lifter Components

序号NO.	公司件号	Part NO.	名称	PartName	零件描述	Description	数量	Number
1	11326005		销子		Pin		1	
2	113829001		R形弹性开口销φ1.5		Cotter pin		1	
3	11326006		电磁铁接头		Solenoid connector		1	
4	113S16004		法兰螺母M8		Flange nuts M8		1	
5	11493000600		电磁铁组件		Solenoid asm.		1	
6	101S11001		后窗板螺钉SM3/16"x28 L=9		screw SM3/16"x28 L=9		4	



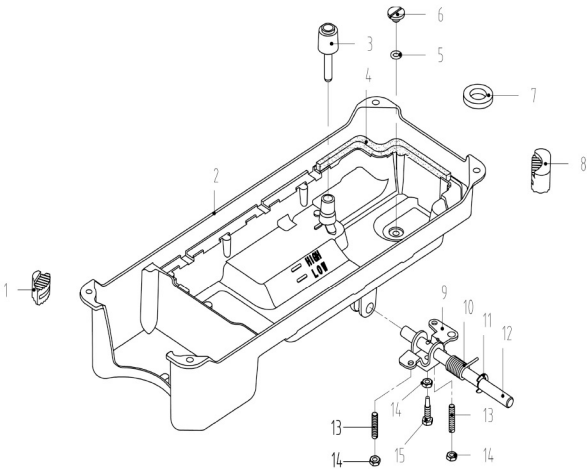
## 8. 润滑部件/Oil Lubrication Components

序号NO.	公司件号	Part NO.	名称	PartName	零件描述	Description	数量	Number
1	11211004		油窗		Oil sight window		1	
2	10122019		油窗O形圈		Rubber ring		1	
3	14121001		上轴供油管		Main shaft oil tube		1	
4	112530005		油泵连接螺栓		Oil pump connecting stud		1	
5	10121001		供油管		Hook oil tube		1	
6	10112020		油泵安装板		Oil pump installing base		1	
7	W03002		弹簧垫圈 5		Spring washer 5		1	
8	209512001		压脚螺钉SM11/64 " ×40 L=10.5		Screw SM11/64 " ×40 L=10.5		1	
9	10103022		油泵体衬套		Oil pump bushing		1	
10	101S30007		柱塞螺钉		Plunger Screw		1	
11	10127013		柱塞簧		Plunger spring		1	
12	10122018		回油柱塞		Plunger		1	
13	10120001		油泵体		Oil pump		1	
14	S04093		油泵螺钉		Screw		3	
15	10111003		油泵叶轮		Oil pump impeller		1	
16	10112021		油泵叶轮托板		Oil pump impeller cover		1	
17	10111007		油泵盖		Lubricating oil pump cover		1	
18	101S30006		螺钉		Screw		3	
19	1012000100		油泵分部件		Lubricating oil pump component		1	
20	116530003		抬牙叉固定螺钉SM15/64 " ×28 L=14.5		Screw SM15/64 " ×28 L=14.5		1	
21	10136001		供油管接头		Rubber joint		1	
22	W02004		GB/T93-1987弹簧垫圈M6		Spring Washer M6		1	
23	13821015		旋梭供油管		Hook driving shaft oil tube		1	
24	11312031		挡油罩		Oil shield cover		1	
25	13827014		油量调节螺钉弹簧		Spring		1	
26	113530001		油量调节螺钉		Screw		1	
27	10423005		油线		Oil wick		1	
28	10127015		回油毡夹		Oil felt clamp		1	
29	10123006		回油毡		Oil felt felt		1	
30	101S11004		挑线杆护罩螺钉SM3/16"×28 L=7		Screw SM3/16"×28 L=7		1	
31	10112023		回油管夹		Oil tube clamp		1	
32	10121007		回油管部件		Oil return tube component		1	
33	10121008		回油管		Oil return tube		1	
34	10112025		油线固定板		Oil wick fixing plate		1	
35	101S11010		压脚扳手螺钉SM9/64"×40 L=11		Screw SM9/64"×40 L=11		2	
36	10123010		油线		Oil wick		1	



9. 绕线部件/ Winding Components

序号NO.	公司件号	Part NO.	名称	PartName	零件描述	Description	数量	Number
1	1383103900		绕线器组件		Bobbin winder asm.		1	
2	114S11008		螺钉M4x6		Screw M4x6		1	
3	GB/T97.1		垫圈4		Washer		1	
4	10113030		压线控制板		Thread press control plate		1	
5	10111120		绕线衬垫		Winding pad		1	
6	13831101		绕线器装置主座		Bobbin winder bed		1	
7	GB/T 896-1986		开口挡圈5		Snap ring		1	
8	10127061		复位板拉簧		Spring		1	
9	13812110		调节板		Regulating plate		1	
10	10110030		绕线凸轮		Bobbin winder cam		1	
11	S09045		螺钉M5x5		Screw M5x5		1	
12	1380510600		绕线器连杆组件		Bobbin winder connecting rod		1	
13	13827103		满线复位簧		spring		1	
14	10127060		弹簧		Spring		1	
15	GB/T 896-1986		开口挡圈4		Snap ring		1	
16	13802111		绕线器主轴		Bobbin winder mian shaft		1	
17	13802026		绕线凸轮轴		Bobbin winder cam shaft		1	
18	S09103		绕线轮螺钉		Screw		2	
19	13831102		绕线轮		Bobbin winder wheel		1	
20	O01110		O型圈		Ring		1	
21	11422062		密封垫		Washer		1	
22	114S11003		螺钉SM3/16"x28 L=10		Screw SM3/16"x28 L=10		3	
23	1411300600		底线夹线器		Bobbin thread tension asm.		1	
24	141S16019		夹线螺母		Thread tension nut		1	
25	11427006		小夹线弹簧		Spring		1	
26	14112015		夹线板		Thread tension disk		2	
27	11413022		夹线过线板		Thread tension guide plate		1	
28	112S13004		夹线螺钉		Screw		1	
29	114S16001		螺母SM11/64"x40		Nut SM11/64"x40		1	
30	11435013		绕线器驱动轮		Driving wheel		1	
31	S10009		螺钉M6x8		Screw M6x8		2	

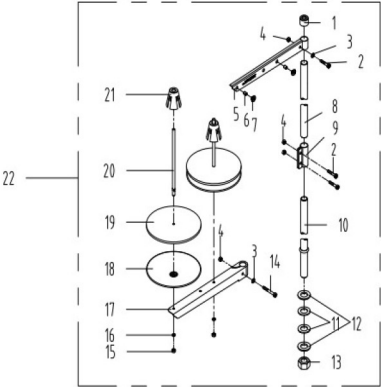


10. 油盘、膝抬压脚分组件/Oil Ceservoir & Knee Lifter Components

序号NO.	公司件号	Part NO.	名称	PartName	零件描述	Description	数量	Number
1	10122022		油盘座垫		Oil reservoir rubber cushion		2	
2	13801020		油盘		Oil Reservoir		1	
3	10111005		抬压脚顶杆		Knee lifter push rod		1	
4	10122020		油盘垫		Oil Reservoir gasket		1	
5	10122021		O型圈		Rubber ring		1	
6	101S11028		排油孔螺钉SM5/16"x24 L=7		Screw SM5/16"x24 L=7		2	
7	10131001		油盘磁铁		Oil reservoir magnet		1	
8	10122023		油盘支架		Oil reservoir rubber cushion		2	
9	10112027		抬压脚双向曲柄		Knee lifter crank		1	
10	10127016		双向曲柄扭簧		Knee lifter spring		1	
11	H05010		GB/T896-1986挡圈9		Snap ring 9		1	
12	10102011		抬压脚轴		Knee lifter shaft		1	
13	101S15012		双向曲柄限位调节螺钉M6 L=30		Screw M6 L=30		2	
14	101S16004		双向曲柄限位调节螺母 M6 L=4		Nut M6 L=4		3	
15	101S12002		双向曲柄螺钉M6 L=26		Screw M6 L=26		1	



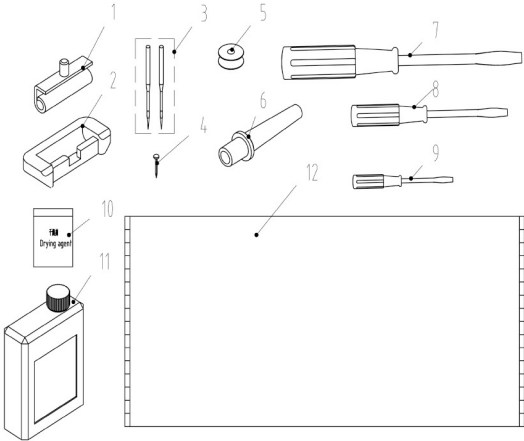
11(1)



11. 机头附件(1)-线架组件/Machine Head Accessories(1)-Thread Stand Components

序号NO.	公司件号	Part NO.	名称	PartName	零件描述	Description	数量	Number
1	20131019		线架杆顶防护橡皮		Spool rest rod rubber cap		1	
2	S04050		十字槽凹六六角头螺栓 M5 L=16		Screw M5 L=16		3	
3	W01047		垫圈M5		Washer M5		2	
4	N01034		螺母 M5		Nut M5		4	
5	13831022		上线架过线杆		Spool rest arm upper		1	
6	10113011		过线圈(内)		Thread guide ring		2	
7	10113010		过线圈(外)		Thread guide ring		2	
8	13831019		线架杆上节		Spool rest rod upper		1	
9	13831021		线架杆接头		Spool rest rod joint		1	
10	13831020		线架杆下节		Spool rest rod lower		1	
11	10122106		橡胶垫圈		Spool rest rod rubber ring		2	
12	W01048		垫圈M16		Washer M16		2	
13	N02008		六角薄螺母 M16		Spool rest rod nut M16		1	
14	S04051		十字槽凹六六角头螺栓 M5		Spool rest arm lower screw M5		1	
15	N01034		螺母 M5		Nut M5		2	
16	W03002		弹簧垫圈 5		Spring washer 5		2	
17	13831023		下线架过线杆		Spool rest arm lower		1	
18	13831024		线盘		Spool rest		2	
19	20131010		线盘垫		Spool rest cushion		2	
20	20131006		线盘钉		Spool pin		2	
21	13831025		线团防松垫		Spool retainer		2	
22	1383100300		线架组件		Thread stand asm.		1	

11(2)



11. 机头附件(2)/Machine Head Accessories(2)

序号NO.	公司件号	Part NO.	名称	PartName	零件描述	Description	数量	Number
1	1011203100		机头连接钩组件		Hinge component		2	
2	10122060		机头连接钩座		Head connecting rubber cushion		2	
3	10117021		机针(14#)		Needle (14#)		4	
	10117022		机针DPx5#21(原料)		Needle (H)		4	
4	101530010		鞋钉P19		Spike P19		6	
5	10118003		梭心		Bobbin		2	
6	10111011		机头支柱		Machine head rest pin		1	
7	20731047		螺丝刀(大)		Screw driver		1	
8	10131003		螺丝刀(中)		Screw driver,medium		1	
9	10131004		螺丝刀(小)		Screw driver,small		1	
10	20131075		干燥剂		Drying agent		4	
11	1381101200		油箱组件		Oiler component		1	
12	114131001		防尘罩		Dust cover		1	

杰克缝纫机股份有限公司  
杰克缝纫机  
全球销量遥遥领先

公司地址(Address of Company) :  
中国浙江省台州市椒江区三甲东海大道东段1008号  
NO.1008, DONGHAI AVENUE EAST, JIAOJIANG DISTRICT,TAIZHOU CITY, ZHEJIANG  
邮编( Zip Code ) : 318000  
国内销售部(Domestic Trade Department) :  
电话(TEL) : 0086-0576-88177788 88177789  
传真(FAX) : 0086-0576-88177758  
国贸部(International Trade Department) :  
电话(TEL) : 0086-0576-88177782 88177774  
传真(FAX) : 0086-0576-88177787  
服务热线 : 400-8876858  
http://www.chinajack.com

资料如有更改, 恕不另行通知, 以实物为准。  
You will be not informed if the file has been revised.Please set sample as standard.  
日期 : 2020.04



www.chinajack.com